

# Studia Orchidacearum Japonicarum III

## Orchidaceae Formosanae Novae Atque Criticae

(Continued from Ann. Rep. Taihoku Bot. Gard. Vol. III.)

auctore

**Noriaki Fukuyama**

Received December 23, 1933

With 3 Text-Figures

19) **Amitostigma yuukiana** FUKUYAMA, sp. nov.

Terrestris, erecta, glaberrima, parvula, 10–13 cm. alta, tuberibus ovoideis vel oblongoideis ellipsoideisve pilosiusculis. Caulis gracillimus, teres, basi vel supra basin unifolius, raro bifolius, basi infra folia 1–2-vaginatus, vaginis scariosis e basi ad supra medium complete amplexentibus sed partibus superioribus leviter patentibus.

Folia suberecta, anguste oblonga vel ovato-lanceolata, raro longe elliptica, in exsiccato plerumque duplicata, apice obtusa vel acutiuscula, basi decurrentia et amplexentia, chartacea, c. 5 cm. longa, medio 1–1.5 cm. lata, utrinque glabra.

Racemus terminalis, erectus, subsecundus, 2–3 cm. longus, subdense 10–20-floratus, bracteis parvulis c. 5 mm. longis ovato-lanceolatis apice acuminatis basi contractis et leviter amplexentibus utrinque glabris.

Flores parvi, rosei, glabri, subapertientes, pedicellis rectis glabris bracteis duplo vel quadruplo superantibus. Sepalum intermedium ovatum, apice obtusum, basi contractum, concavum, membranaceum, 2.5–3 mm. longum, 1.5–2 mm. latum, cum petalis in galeam connivens, uninervatum, lateralibus obovatis paullo obliquis apice obtusis basi attenuatis c. 3 mm. longis 1.5–2 mm. latis membranaceis uninervatis. Petala oblique elliptica, utrinque acuta, c. 3 mm. longa, 2 mm. lata, membranacea, glabra, uninervata.

Labellum glabrum, subrectum, 3.5–4 mm. longum, infra medium trilobatum, inter apices loborum lateralium explanatorum c. 3.5 mm. latum, ad basin gradatim attenuatum, lobis lateralibus linearibus vel longe triangularibus a lobo intermedio angulo 45° egressis c. 1 mm. longis, lobo intermedio lateralibus longiore, 1.5–2 mm. longo, obovato-cuneato, apice truncato-concavo, infra apicem 1.5 mm. lato, calcare cylindrico subrecto obtusiusculo



Fig. 1. *Eulophia Segawae* FUKUYAMA  
(K. SEGAWA PHOTO.)

reflexisque, basi vix contractis, medio 2.5 mm. latis. Petala anguste ligulata, cum sepalo intermedio erecto-conniventia, apice acuta, basi non attenuata, c. 9 mm. longa, 2.5 mm. lata, utrinque glabra, trinervata.

Labellum ovatum, suberectum, c. 8 mm. longum, ecarinatum elamellatumque, supra medium trilobatum, lobis lateralibus subintegris latere exteriori c. 6 mm. longis latere interiore c. 2.5 mm. longis infra apicem 2 mm. latis apice rotundatis columnam amplectentibus, lobo intermedio patente, suborbiculari, c. 5 mm. lato, margine inaequaliter perdentato, dentibus obtusis, superne a medio labelli sursum prope apicem sparse fimbriato-cristato, calcare cylindrico recto obtuso 3 mm. longo 1.5 mm. lato. Columna erecta, 4 mm. longa, 2 mm. lata.

Nom. Jap. Furisode-yagara (nov.)

Hab. Formosa; praef. Taitoo, Riran-shichoo, Tokobanryo, (KOKICHI SEGAWA! Feb. 15, 1933. Typus in Herb. Segawae).

30) *Cymbidium aspidistrifolium* FUKUYAMA, sp. nov.

Terrestre, erectum, c. 35 cm. altum, basi distiche pluri-vaginatum,

Flores c. 10, erecti vel subnutantes, subpatentes, in apice caulis subdense racemosi, parte florifera 4 cm. longa erecta glabra, bracteis ovato-lanceolatis, apice acuto-acuminatis, basi leviter contractis, utrinque glabris, 3-5-nervatis. pedicellis cum ovariis 5-10 mm. longis basi gracilibus a meido sursum apicem dilatatis. Sepala aequilonga, intermedio ligulato apice apiculato basi haud contracto plus minusve carnosio utrinque glabro 9 mm. longo 3 mm. lato 5-nervato, lateralibus intermedio subaequiformibus sed paullo falcatis, latere inferiore truncatis, apice apiculatis

radicibus teretibus glabris elongatis c. 4 mm. diametientibus.

Folia 3, basilaria vel in apice caulis vetustioris alternatim fasciculata, erecto-patentia, oblanceolata vel longe elliptica, apice acuta, basi ad petiolum longe decurrentia, margine integra, tenuiter coriacea, non plicata, glabra, supra virentia vel atrovirentia, subtus pallida, costis supra impressis subtus elevatis, nervis principalibus utroque latere costae 4, inter nervos multi-venulosa.

Scapus e basi fasciculi foliorum oriundus, simplex, erectus, glaber, c. 15 cm. longus, 1-4-floratus, bracteis glabris linearibus acuminatis pedi-

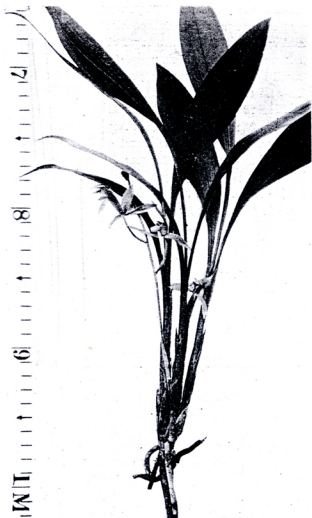


Fig. 2. *Cymbidium aspidistrifolium* FUKUYAMA

cellis brevioribus c. 1 cm. longis.

Flores apertientes, virides, glabri, haud odorati, pedicellis glabris c. 2.5 cm. longis. Sepala erecto-patentia, glabra, vivo viridia, aequilonga, aequilata, subaequiformia, intermedio lineari-oblongo apice acuto ad basin leviter attenuato c. 2.5 cm. longo medio 6 mm. lato, lateralibus paullo obliquis, apice acutis, ad basin gradatim attenuatis. Petala oblique ligulata, e infra medium sursum apicem sensim acuta, basi contracta, papyracea, intus medio purpureo-lineata, sepalis paullo breviora, c. 2.4 cm. longa, infra

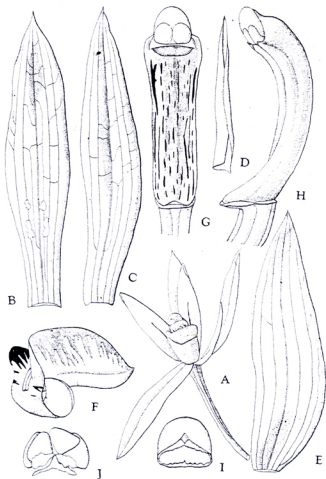


Fig. 3. *Cymbidium aspidistrifolium* FUKUYAMA

A. Flos  $\times 1\frac{1}{2}$  B. Sepalum intermedium  $\times 3$  C. Sepalum laterale  $\times 3$

D. Bractea  $\times 3$  E. Petalum  $\times 3$  F. Labellum  $\times 3$

G, H. Columna  $\times 4$  I. Anthera  $\times 5$  J. Pollinia  $\times 5$

medium c. 6.5 mm. lata.

Labellum circuitu oblongum, curvatum, glabrum, basi rotundatum, apice acutum, infra medium obscure trilobatum, supra purpureo-maculatum, explanate c. 2 cm. longum, supra medium c. 1 cm. latum, carinis 2 parallelis e basi usque supra medium ornatis. Columna elongata, suberecta, leviter incurva, glabra, semiteres, c. 1.3 cm. longa, 3-3.5 mm. lata.

Nom. Jap. Otome-nagiran (nov.)

Hab. Formosa; praef. Taihoku, in silvis laurilignosis monte Syogyoku-san, (N. FUKUYAMA! Oct. 1933. no. 4137. Typus in Herb. Orch. Fuk.).

This species somewhat resembles to *Cymbidium nagifolium* MASAMUNE and *Cymbidium lancifolium* HOOK. F., but it is easily distinguished from both of them by its small and green flowers, as well as by its habit.

### 31) *Gastrochilus raraensis* FUKUYAMA, sp. nov.

Epiphyticus, adpresse prostratus, glaber, c. 2-10 cm. longus, radicibus e caule emittentibus filiformibus vel vermiformibus flexuosis glabris, caulibus vaginis foliorum persistentium omnino obtectis, vivo c. 1.5-2 mm. diametentibus.

Folia patentia, alterna, et disticha, oblongo-elliptica vel elliptica, apice oblique acuta, basi contracta subito ad vaginam abeuntia, 1.5-2 cm. longa, medio 5-7 mm. lata, crassa, supra ad costas sulcata, subtus convexa, utrinque purpureo-maculato-punctata.

Racemus breviter pedunculatus, umbelliformi-abbreviatus, 4-6-floratus, cum pedunculo 1-1.5 cm. longus, bracteis pedicello multo brevioribus triangulatis apice acutis basi non contractis.

Flores parvuli, subclausi, glabri, virentes, extus sparse purpureo-punctati, pedicellis erecto-patentibus glabris c. 1 cm. longis. Sepala crassa, glabra, leviter concava, sepalo intermedio obovato apice obtuso c. 4.5 mm. longo medio 2 mm. lato, sepalis lateralibus ellipticis, apice acutis, basi contractis, 4 mm. longis, 2 mm. latis. Petala crassa, quam sepala paullo breviora, oblique obovata, apice obtusa, 3-3.5 mm. longa.

Labellum sessile, c. 2.5 mm. longum, hypochilio calcarato-saccatum, sacco conico, leviter complanato, anteriore plus minusve curvato, apice obtuso, 3.5-4 mm. alto, intus et extus glabro, albescente, purpureo-punctato, epichilio semiorbiculato apice vix emarginato margine paullo involuto ciliatoque supra subdense piloso subtus glabro c. 1.5-2 mm. longo medio disco calloso piloso viridescente ornato. Columna brevissima, anthera ovoideo-cordata.

Nom. Jap. Benihi-ran (nov.)

Hab. Formosa; praef. Taihoku, in silvis monte Rara-san c. 2000 m.